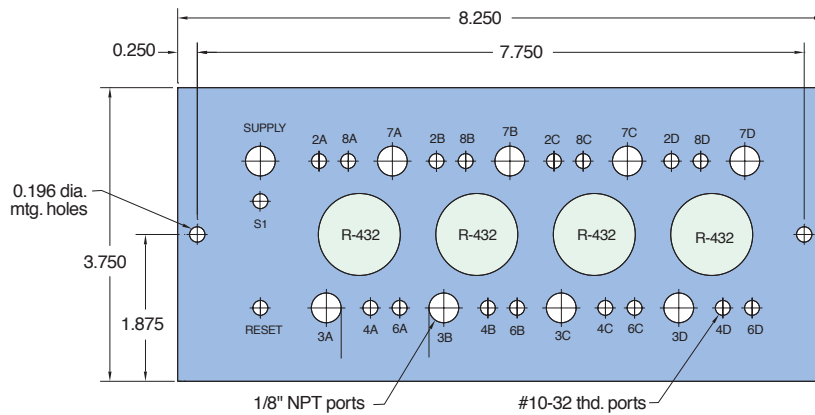


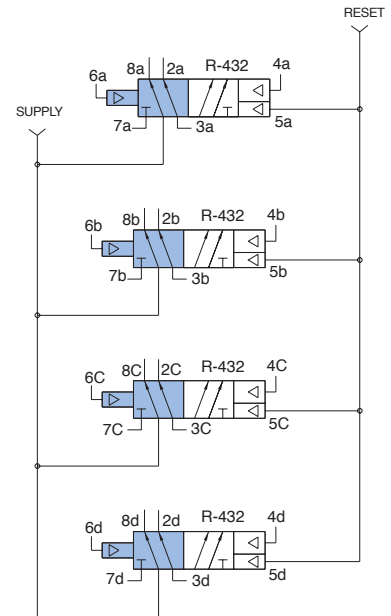
## CM-016

### 4-Way Valve Circuit Board (Common Supply)



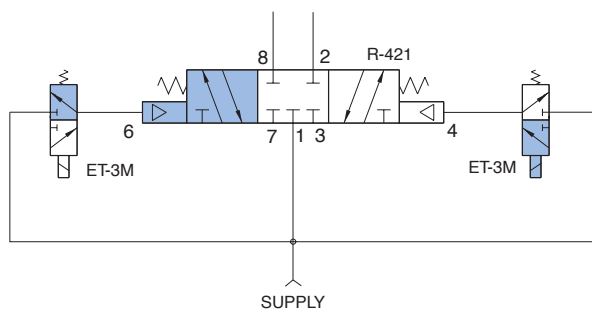
**Size:** 3 3/4" x 8 3/16" x 9/16" thick - 4 modules

**Use:** Provides mounting for four 4-way modular valves operating from a common supply. May utilize Clippard [R-401](#), [R-402](#), [R-405](#), [R-410](#), [R-412](#), [R-421](#), [R-431](#), [R-432](#), [R-441](#), or [R-442](#) valves. Supply and exhaust are tapped 1/8" NPT. Outputs are #10-32 tapped ports in the circuit board.



## CM-018

### Circuit Board for Double Electronically Piloted 4-Way Valves



**Size:** 2 5/8" x 4 3/4" x 9/16" thick - 1 module;  
2 ET-3M-xx valves

**Use:** Provides mounting platform for one [R-402](#), [R-412](#) or [R-421](#) pneumatically operated valve and two ET-3M valves for a double electronic piloted control circuit

**Operation:** Supply air passes to port 1 of the R-421 and to supply ports of the ET-3M valves. R-421 is a three position, center closed valve, spring centered. Electronic signal to either ET-3M will pilot R-421 giving corresponding output as long as that ET valve remains energized. Energizing both ET valves simultaneously will cancel out opposing pilots. Springs will return R-421 to center-closed position.

